

# Molex 52116-0340 PDF

深圳创唯电子有限公司

**<http://www.molex-connect.com>**

【1. 適用範圍 SCOPE】

本仕様書は、 2.5 WATERPROOF CONN. について規定する。

This specification covers the 2.5 WATERPROOF CONN.

【2. 製品名称及び型番 PRODUCT NAME AND PART NUMBER】

製 品 名 称 Product Name	製 品 型 番 Part Number
クリンプ ピン Crimp Pin	5 0 0 3 8 - 8 * 0 0
プラグ ハウジングアセンブリ Plug Housing Assembly	5 2 1 1 6 - 0 2 * * 5 2 1 1 6 - 0 3 * *

\* : 図面参照 Refer to the drawings.

**【3. 定格及び適用電線 RATINGS AND APPLICABLE WIRE】**

項目 Item	規格 Standard			
最大許容電圧 Rated Voltage(MAX.)	250 V [ A C (実効値 rms) / D C ]			
最大許容電流 及び適用電線 Rated Current(MAX.) and Applicable Wires	52116-**** ただし下記を除く Except Below Items	AVS - 0.3 AWG #20	3 A	被覆外径 : $\phi 1.8 \sim \phi 1.9$ mm Insulation O.D. : $\phi 1.8 \sim \phi 1.9$ mm
	52116-0243	AVSS - 0.3/0.3f AVSS - 0.5/0.5f CAVS - 0.3/0.5 AWG #22 ISO - 0.5		被覆外径 : $\phi 1.4 \sim \phi 1.7$ mm Insulation O.D. : $\phi 1.4 \sim \phi 1.7$ mm
使用温度範囲 Ambient temperature Range	- 4 0 °C ~ + 1 0 5 °C*1			

\*1：通電による温度上昇分を含む。

Including terminal temperature rise.

REV.	A						
SHEET	1~7						
REVISE ON PC ONLY				TITLE:			
A	RELEASED JTR2014-0002 '13/07/05 K.KAYAMURA			2.5mm WATERPROOF CONN.			
				製品仕様書			
REV.	DESCRIPTION			THIS DOCUMENT CONTAINS INFORMATION THAT IS PROPRIETARY TO MOLEX INC. AND SHOULD NOT BE USED WITHOUT WRITTEN PERMISSION			
DESIGN CONTROL JTR			STATUS	WRITTEN BY: K.KAYAMURA	CHECKED BY: TA.ITO	APPROVED BY: MA.YAMAMOTO	DATE: YR/MO/DAY 2013/07/05
DOCUMENT NUMBER PS-52116-001							SHEET 1 OF 7
EN-037(2013-04 rev.1)							

## 【4. 性能 PERFORMANCE】

嵌合相手 : 52117-02\*\*, 52117-03\*\*, 50039-8\*00

Mate with : 52117-02\*\*, 52117-03\*\*, 50039-8\*00

### 4-1. 電気的性能 Electrical Performance

項 目 Item		条 件 Test Condition	規 格 Requirement
4-1-1	接 触 抵 抗 Contact Resistance	コネクタを嵌合させ、開放電圧 20mV 以下、 短絡電流 1mA にて測定する。 Mate connectors measure by dry circuit, 20mV MAX., 1mA.	10 mΩ MAX.
4-1-2	絶 縁 抵 抗 Insulation Resistance	コネクタを嵌合させ、隣接するターミナル間及び ターミナル、アース間にDC 500V を印加し測定する。 Mate connectors, apply 500V DC between adjacent terminals.	250 MΩ MIN.
4-1-3	耐 電 圧 Dielectric Strength	コネクタを嵌合させ、隣接するターミナル間及び ターミナル、アース間にAC 500V(実効値)を1分間印加する。 Mate connectors, apply 500V AC(rms) for 1 minute between adjacent terminals.	異状なきこと No Breakdown

REVISE ON PC ONLY

**A**

SEE SHEET 1 OF 7

REV.

DESCRIPTION

TITLE:

2.5mm WATERPROOF CONN.

**製品仕様書**

THIS DOCUMENT CONTAINS INFORMATION THAT IS PROPRIETARY TO  
MOLEX INC. AND SHOULD NOT BE USED WITHOUT WRITTEN PERMISSION

DOCUMENT NUMBER  
**PS-52116-001**

FILE NAME  
PS-52116-001.docx

SHEET  
2 OF 7

**4-2. 機械的性能 Mechanical Performance**

項 目 Item		条 件 Test Condition		規 格 Requirement
4-2-1	初期挿抜力 Initial Insertion / Withdrawal force	毎分 25 ± 3 mmの速さで挿入、 抜去を行う。 (抜去力においてはロック機構を 作用させないで行う。)  Insert and withdraw connectors, at the speed rate of 25±3 mm per minute. Conduct without any lock structure action when measure the withdraw force.	挿入力 Insertion force	58.8 N { 6.0 kgf } MAX.
			抜去力 Withdrawal force	53.9 N { 5.5 kgf } MAX.
4-2-2	圧着部 引張り強度 Crimping pull out force	圧着されたターミナルを治具に固 定し、電線を軸方向に毎分100±3 mmの速さで引っ張る。  Fix the crimped terminal, apply axial pull out force on the speed rate of 100±3 mm/minute.	AVS – 0.3 AVSS – 0.3 CAVS – 0.3 AWG #22	49 N { 5.0 kgf } MIN.
			AVSS – 0.5 CAVS – 0.5 AWG #20 ISO – 0.5	53.9N { 5.5 kgf } MIN.
4-2-3	ターミナル 保持力 Terminal/ Housing Retention Force	圧着されたターミナルをハウジングに装着し、電線を 軸方向に毎分 100±3mmの速さで引っ張る。  Apply axial pull out force at the speed rate of 100±3 mm per minute on the terminal assembled in the housing.		29.4 N { 3.0 kgf } MIN.
4-2-4	ロック強度 Lock Strength	コネクタを嵌合させ、一方を固定し他方を軸方向に毎分25 ±3mmの速さで引っ張る。 Fix the one side, and apply axial pull out force on the speed rate of 35±3 mm per minute for another side, After mated connector.		68.6N { 7.0 kgf } MIN.

REVISE ON PC ONLY

**A**

SEE SHEET 1 OF 7

REV.

DESCRIPTION

TITLE:

2.5mm WATERPROOF CONN.

**製品仕様書**

 THIS DOCUMENT CONTAINS INFORMATION THAT IS PROPRIETARY TO  
MOLEX INC. AND SHOULD NOT BE USED WITHOUT WRITTEN PERMISSION

 DOCUMENT NUMBER  
**PS-52116-001**

FILE NAME

PS-52116-001.docx

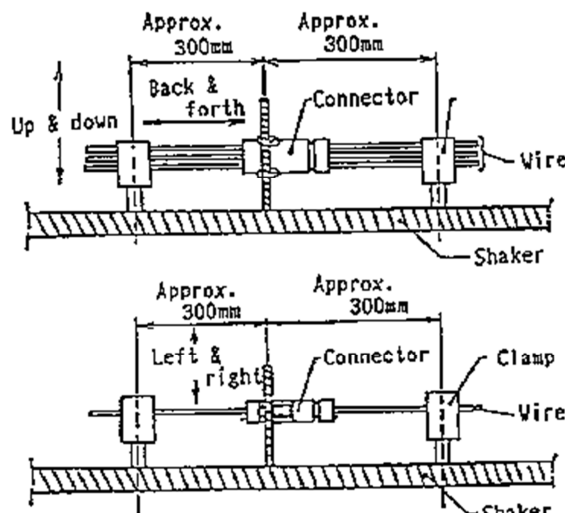
SHEET

3 OF 7

EN-037(2013-04 rev.1)

## 4-3. その他 Environmental Performance and Others

項 目 Item		条 件 Test Condition	規 格 Requirement	
4-3-1	くり返し挿抜 Repeated Insertion / Withdrawal	ハウジングロックを削除し、1分間に10回以下の速さで挿入、抜去を10回繰り返す。  When mated up to 10 cycles repeatedly by the rate of 10 cycles per minute.	接触抵抗 Contact Resistance	20 mΩ MAX.
			抜去力 Withdrawal Force	53.9 N { 5.5 kgf } MAX.
4-3-2	温 度 上 昇 Temperature Rise	全極の半分を直列に接続したコネクタを無風室にて最大許容電流を通電し、コネクタの温度上昇分を測定する。(UL 498 に準拠) Carrying rated current load. (Based upon UL 498)	温度上昇 Temperature Rise	25 °C MAX.
4-3-3	耐 振 動 性 Vibration Exposure	<p>全極を直列に接続したコネクタを下図の様に振動によって電線が振動板に接触しないような高さでセットする。 振動数50~200 Hz間を連続的に周期 8分にて変化させ振動加速度 6.8Gにて、下図の上下方向 4 時間、前後方向、左右方向各 2 時間加振する。</p> <p>Connect all contacts in series, mount connector on the shaker to be subject to test method a) * At the first half of 4 hours, 100 μ A current shall be loaded, at the latter half, 3A current shall be loaded for half of contacts. a) Clamp the specimen in height such as the wires would not be touched to the surface of shaker during vibration. Vibrate the specimen with the following conditions.</p> <p>Acceleration : 6.8 G Frequency : 50-200-50 Hz / 8 minutes. Duration : Up and down, 4 hours, Back an forth, 2 hours, Left and right, 2 hours (as shown in the Fig.)</p>	接触抵抗 Contact Resistance	20 mΩ MAX.
			瞬断 Discontinuity	20 μ sec. MAX.



REVISE ON PC ONLY

**A**

SEE SHEET 1 OF 7

REV.

DESCRIPTION

TITLE:

2.5mm WATERPROOF CONN.

**製品仕様書**

THIS DOCUMENT CONTAINS INFORMATION THAT IS PROPRIETARY TO MOLEX INC. AND SHOULD NOT BE USED WITHOUT WRITTEN PERMISSION

 DOCUMENT NUMBER  
**PS-52116-001**

FILE NAME

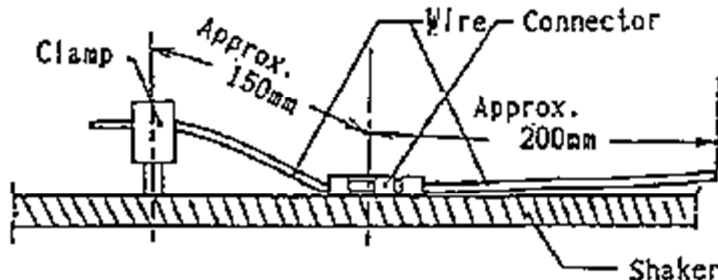
PS-52116-001.docx

SHEET

4 OF 7

EN-037(2013-04 rev.1)

## Environmental Performance and Others (Continued)

項 目 Item		条 件 Test Condition	規 格 Requirement	
4-3-4	耐 衝 撃 性 Mechanical shock	<p>下図の様にコネクタを振動台に取り付け、コネクタが常時振動板に接し、かつ拘束されない状態にて振動数 10～50 Hz間を連続的に8分間の周期で変化させ、振動加速度 6.8Gにて、1時間加振する。</p> <p>Clamp specimen as shown in the following Fig., so the connector is not restricted and placed on the surface of shaker. Vibrate the specimen with the following conditions.</p> <p>Acceleration : 6.8 G Frequency : 10-50-10 Hz / 8 minutes. Duration : 1 hour</p> 	接触抵抗 Contact Resistance	20 mΩ MAX.
			瞬断 Discontinuity	20 μ sec. MAX.
4-3-5	耐 熱 性 Heat Resistance	<p>コネクタを嵌合させ、120±2℃の雰囲気中に24時間放置後取り出し、1～2時間室温に放置する。</p> <p>Mate connectors and expose to 120±2℃ for 24 hours. Upon completion of the exposure period, the test specimens shall be conditioned at ambient room conditions for 1 to 2 hours, after which the specified measurements shall be performed.</p>	端子保持力 Terminal Retention	24.5 N { 2.5 kgf } MIN.
			接触抵抗 Contact Resistance	20 mΩ MAX.
			圧着強度 Crimp Strength	4-2-2項満足のこと Must meet 4-2-2
4-3-6	耐 寒 性 Cold Resistance	<p>コネクタを嵌合させ、-40<sup>+0</sup>/<sub>-10</sub>℃の雰囲気中に96時間放置後取り出し、1～2時間室温に放置する。</p> <p>Mate connectors and expose to -40±2℃ for 96 hours. Upon completion of the exposure period, the test specimens shall be conditioned at ambient room conditions for 1 to 2 hours, after which the specified measurements shall be performed.</p>	端子保持力 Terminal Retention	24.5 N { 2.5 kgf } MIN.
			接触抵抗 Contact Resistance	20 mΩ MAX.
			圧着強度 Crimp Strength	4-2-2項満足のこと Must meet 4-2-2

REVISE ON PC ONLY

A

SEE SHEET 1 OF 7

TITLE:

2.5mm WATERPROOF CONN.

製品仕様書

REV.

DESCRIPTION

THIS DOCUMENT CONTAINS INFORMATION THAT IS PROPRIETARY TO MOLEX INC. AND SHOULD NOT BE USED WITHOUT WRITTEN PERMISSION

DOCUMENT NUMBER  
PS-52116-001

FILE NAME

PS-52116-001.docx

SHEET

5 OF 7

## Environmental Performance and Others (Continued)

項 目 Item		条 件 Test Condition	規 格 Requirement	
4-3-7	耐 水 性 Water resistant	JIS D0203のS 2 に準ずる。 According to JIS D0203・S02 Refer to the attached papers. Papers : Method of Moisture, Rain and Spray Test for Automobile Parts	接触抵抗 Contact Resistance	20 mΩ MAX.
			絶縁抵抗 Insulation Resistance	100 MΩ MIN.
4-3-8	塩 水 噴 霧 Salt Spray	コネクタを嵌合させ、35±2 °Cにて5±1% 重量比の塩水を 24時間噴霧し、1 時間放置を 1 サイクルとして、4 サイクル行う。 24 hours exposure to a salt spray from the 5±1 % solution at 35±2 °C, and expose for 1 hour repeat 4 cycles as the above is 1 cycle.	接触抵抗 Contact Resistance	20 mΩ MAX.
			絶縁抵抗 Insulation Resistance	100 MΩ MIN.
4-3-9	亜硫酸ガス SO <sub>2</sub> Gas	コネクタを嵌合させ、湿度 90 RH%、 500±5 ppm の亜硫酸ガス中に、8 時間放置 する。 8 hours exposure to 500±5 ppm. 90 RH% SO <sub>2</sub> Gas.	外観 Appearance	異状なきこと No damage
			接触抵抗 Contact Resistance	20 mΩ MAX.
4-3-10	耐 塵 性 (IP6X) Dust Proofness (IP6X)	IEC 60529(JIS C0920)に準ずる。 According to IEC 60529(JIS C0920) Expose connectors to suspended dust under pressure.	粉塵の侵入なきこと No dust penetration into mated connector	
4-3-11	防水性 (IPX7) Water resistant (IPX7)	IEC 60529(JIS C0920)に準ずる。 According to IEC 60529(JIS C0920) Submerge mated connector under water 1 meter minimum for 30 minutes minimum duration.	水の侵入なきこと No Water penetration into mated connector	

## 【5. 外観形状、寸法及び材質 PRODUCT SHAPE, DIMENSIONS AND MATERIALS】

添付図面参照 Refer to the attached drawing.

	REVISE ON PC ONLY		TITLE: 2.5mm WATERPROOF CONN.  製品仕様書		
	A	SEE SHEET 1 OF 7			
	REV.	DESCRIPTION	THIS DOCUMENT CONTAINS INFORMATION THAT IS PROPRIETARY TO MOLEX INC. AND SHOULD NOT BE USED WITHOUT WRITTEN PERMISSION		
DOCUMENT NUMBER PS-52116-001				FILE NAME PS-52116-001.docx	SHEET 6 OF 7
EN-037(2013-04 rev.1					



PRODUCT SPECIFICATION

LANGUAGE  
JAPANESE  
ENGLISH

REV.	REV. RECORD	DATE	EC NO.	WRTTN:	CH'K:
A	RELEASED	'13/07/05	JTR2014-0002	K.KAYAMURA	T.ITO

--

	REVISE ON PC ONLY		TITLE: 2.5mm WATERPROOF CONN.  製品仕様書		
	A	SEE SHEET 1 OF 7			
	REV.	DESCRIPTION	THIS DOCUMENT CONTAINS INFORMATION THAT IS PROPRIETARY TO MOLEX INC. AND SHOULD NOT BE USED WITHOUT WRITTEN PERMISSION		
DOCUMENT NUMBER PS-52116-001				FILE NAME PS-52116-001.docx	SHEET 7 OF 7
EN-037(2013-04 rev.1)					



# Mizu-P25™ Miniature Waterproof Connectors 250 Volts Type



REV.	C1																		
SHEET	1-13																		
REVISE ON PC ONLY							TITLE:  <b>APPLICATION SPECIFICATION FOR 2.5 WATERPROOF CONN.</b>												
<b>C1</b>	REVISED 620884 2019/07/23 R.HORI																		
REV.	DESCRIPTION						THIS DOCUMENT CONTAINS INFORMATION THAT IS PROPRIETARY TO MOLEX ELECTRONIC TECHNOLOGIES, LLC AND SHOULD NOT BE USED WITHOUT WRITTEN PERMISSION												
DESIGN CONTROL JTR				STATUS			WRITTEN BY: SINAOKA			CHECKED BY: SANDO			APPROVED BY: MAYAMAMOTO			DATE: 2011/12/02			
DOCUMENT NUMBER AS-52117-001							DOC. TYPE PS		DOC. PART 001		CUSTOMER GENERAL MARKET					SHEET 1 OF 13			
EN-127(2015-12)																			

Rev.	MODIFICATION	EC NO.	SHEET	Date
A	PROPOSED & RELEASED	JTR2012-0053	ALL	2012/ 2/ 3
B	REVISED	JTR2016-0105	ALL	2016/ 5/13
C	REVISED	607893	SHEET4	2018/11/20
C1	REVISED	620884	SHEET3	2019/07/23

REVISE ON PC ONLY

**C1**

SEE SHEET 1 OF 13

TITLE:

**APPLICATION SPECIFICATION  
FOR 2.5 WATERPROOF CONN.**THIS DOCUMENT CONTAINS INFORMATION THAT IS PROPRIETARY TO MOLEX ELECTRONIC  
TECHNOLOGIES, LLC AND SHOULD NOT BE USED WITHOUT WRITTEN PERMISSION

REV.

DESCRIPTION

DOCUMENT NUMBER

**AS-52117-001**

DOC. TYPE

**PS**

DOC. PART

**001**

CUSTOMER

**GENERAL MARKET**

SHEET

2 OF 13

**SUMMARY****1.0 GENERAL PRESENTATION****1.1 PART NUMBERS****1.2 COMPONENTS****2.0 CONNECTOR ASSEMBLY PROCESS****2.1 TERMINALS CRIMPING****2.2 TERMINALS INSERTION****2.3 CAP LOCKING****2.4 MATING****2.5 UNMATING**

REVISE ON PC ONLY

**C1**

SEE SHEET 1 OF 13

TITLE:

**APPLICATION SPECIFICATION  
FOR 2.5 WATERPROOF CONN.**THIS DOCUMENT CONTAINS INFORMATION THAT IS PROPRIETARY TO MOLEX ELECTRONIC  
TECHNOLOGIES, LLC AND SHOULD NOT BE USED WITHOUT WRITTEN PERMISSION

REV.

DESCRIPTION

DOCUMENT NUMBER

**AS-52117-001**

DOC. TYPE

**PS**

DOC. PART

**001**

CUSTOMER

**GENERAL MARKET**

SHEET

3 OF 13

## 1.0 GENERAL PRESENTATION

The plug and receptacle housings (hereinafter referred to as "housing assembly ") include a wire-end seal and are shipped in a pre-lock state, whereby the cap is not completely locked, but is held in a provisional state.

### 1.1 PART NUMBERS

DESCRIPTION	MOLEX P/N	COLOR
CONNECTOR		
Plug Housing Assembly 2way	52116-0240	White
	52116-0241	Black
	52116-0242	Red
	52116-0243	White
Plug Housing Assembly 3way	52116-0340	White
	52116-0341	Black
	52116-0342	Red
Plug Housing Assembly 4way	52116-0410	White
	52116-0411	Black
Receptacle Housing Assembly 2way	52117-0240	White
	52117-0241	Black
	52117-0242	Red
	52117-0243	White
Receptacle Housing Assembly 3way	52117-0244	Black
	52117-0340	White
	52117-0341	Black
Receptacle Housing Assembly 4way	52117-0342	Red
	52117-0410	White
	52117-0411	Black
TERMINAL		
Crimp Pin	50038-8*00	N / A
Crimp Receptacle	50039-8*00	N / A

REVISE ON PC ONLY

**C1**

SEE SHEET 1 OF 13

TITLE:

**APPLICATION SPECIFICATION  
FOR 2.5 WATERPROOF CONN.**

THIS DOCUMENT CONTAINS INFORMATION THAT IS PROPRIETARY TO MOLEX ELECTRONIC  
TECHNOLOGIES, LLC AND SHOULD NOT BE USED WITHOUT WRITTEN PERMISSION

REV.

DESCRIPTION

DOCUMENT NUMBER  
**AS-52117-001**

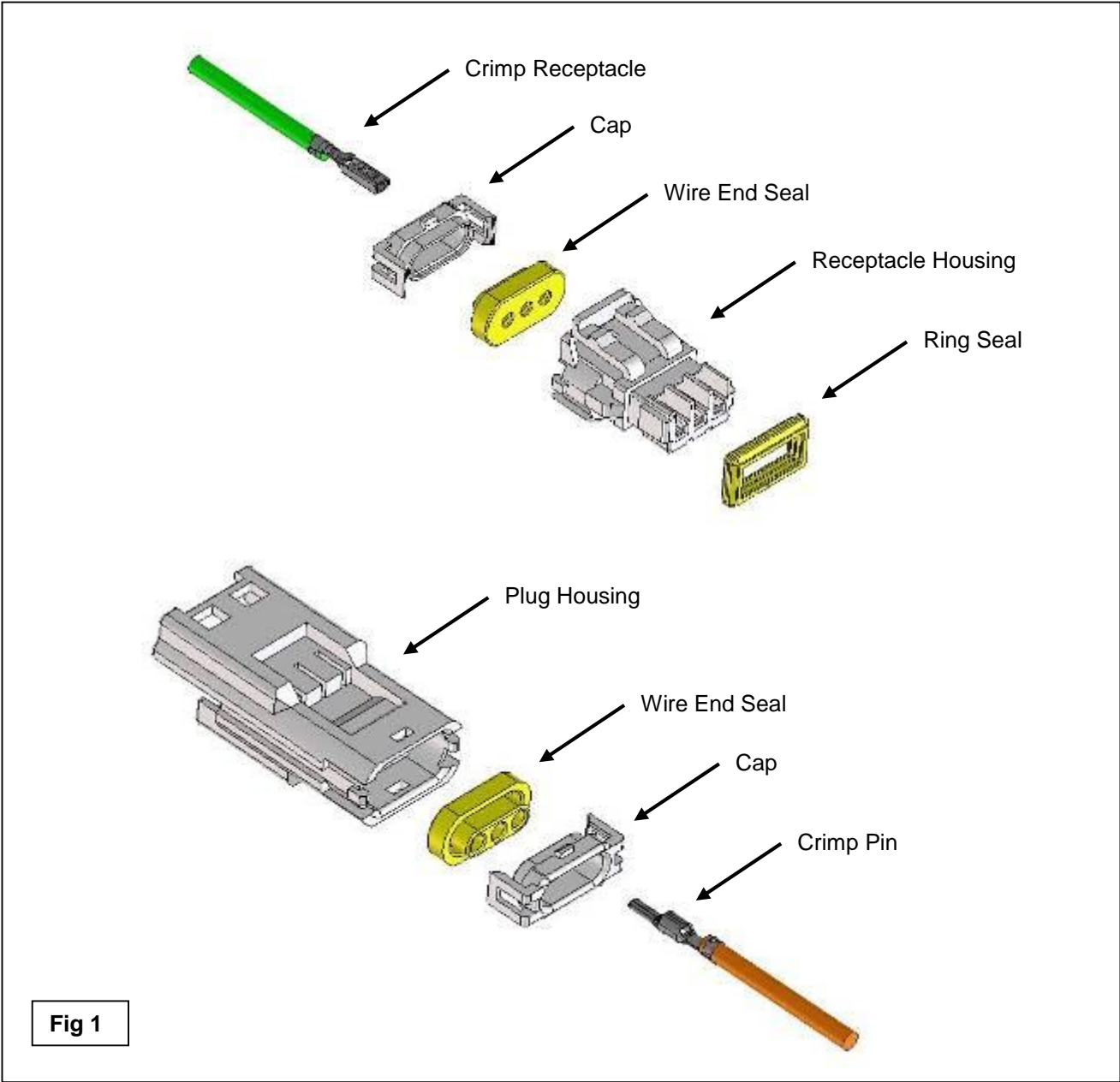
DOC. TYPE  
**PS**

DOC. PART  
**001**

CUSTOMER  
**GENERAL MARKET**

SHEET  
**4 OF 13**

1.2 COMPONENTS



REVISE ON PC ONLY		TITLE: <b>APPLICATION SPECIFICATION FOR 2.5 WATERPROOF CONN.</b>			
<b>C1</b>	SEE SHEET 1 OF 13				
REV.	DESCRIPTION	THIS DOCUMENT CONTAINS INFORMATION THAT IS PROPRIETARY TO MOLEX ELECTRONIC TECHNOLOGIES, LLC AND SHOULD NOT BE USED WITHOUT WRITTEN PERMISSION			
DOCUMENT NUMBER AS-52117-001		DOC. TYPE PS	DOC. PART 001	CUSTOMER GENERAL MARKET	SHEET 5 OF 13
EN-127(2015-12)					

## 2.0 CONNECTOR ASSEMBLY PROCESS

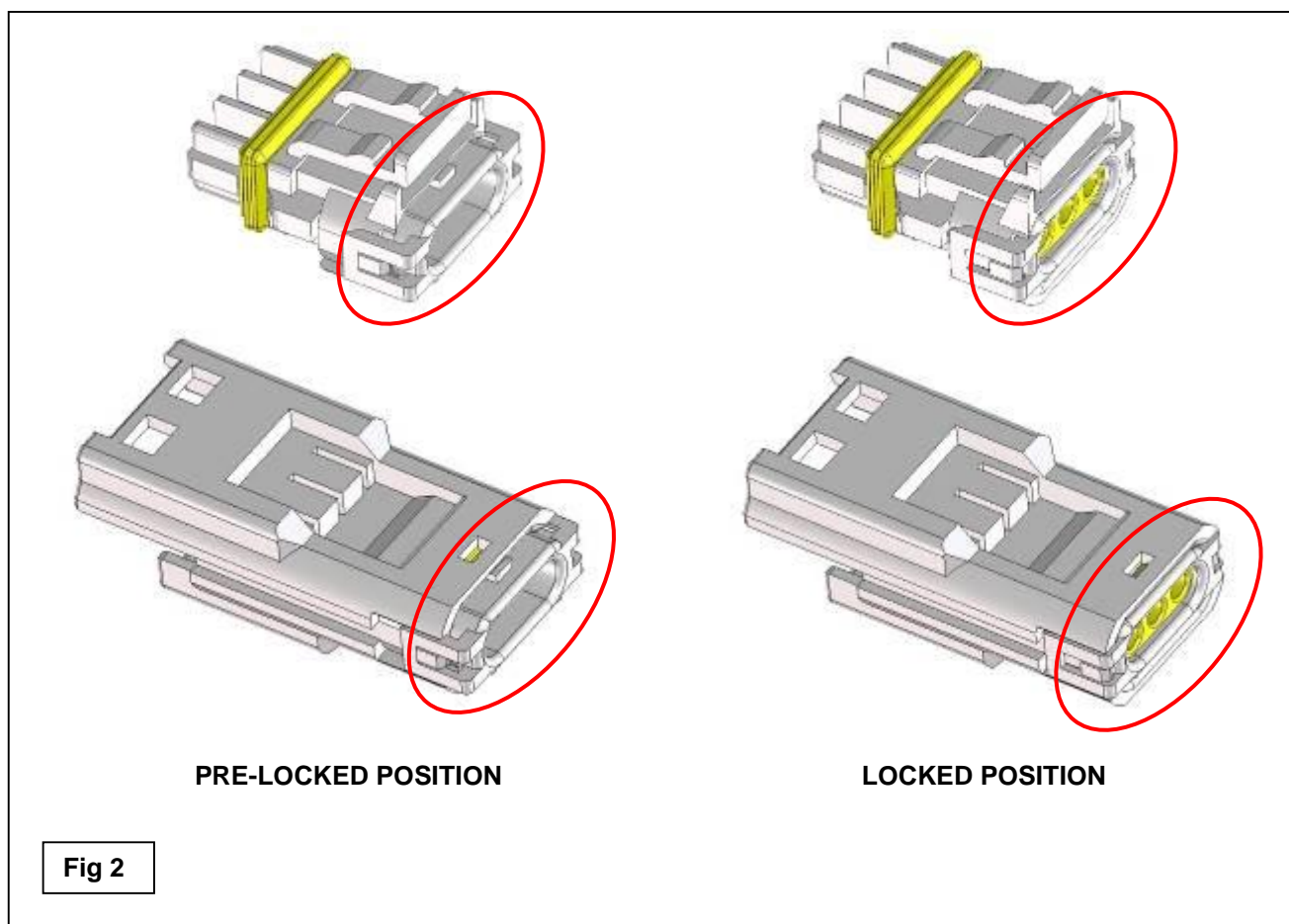
### 2.1 TERMINALS CRIMPING

Please refer to Molex Crimp Specifications [AS-50038-001].

### 2.2 TERMINALS INSERTION

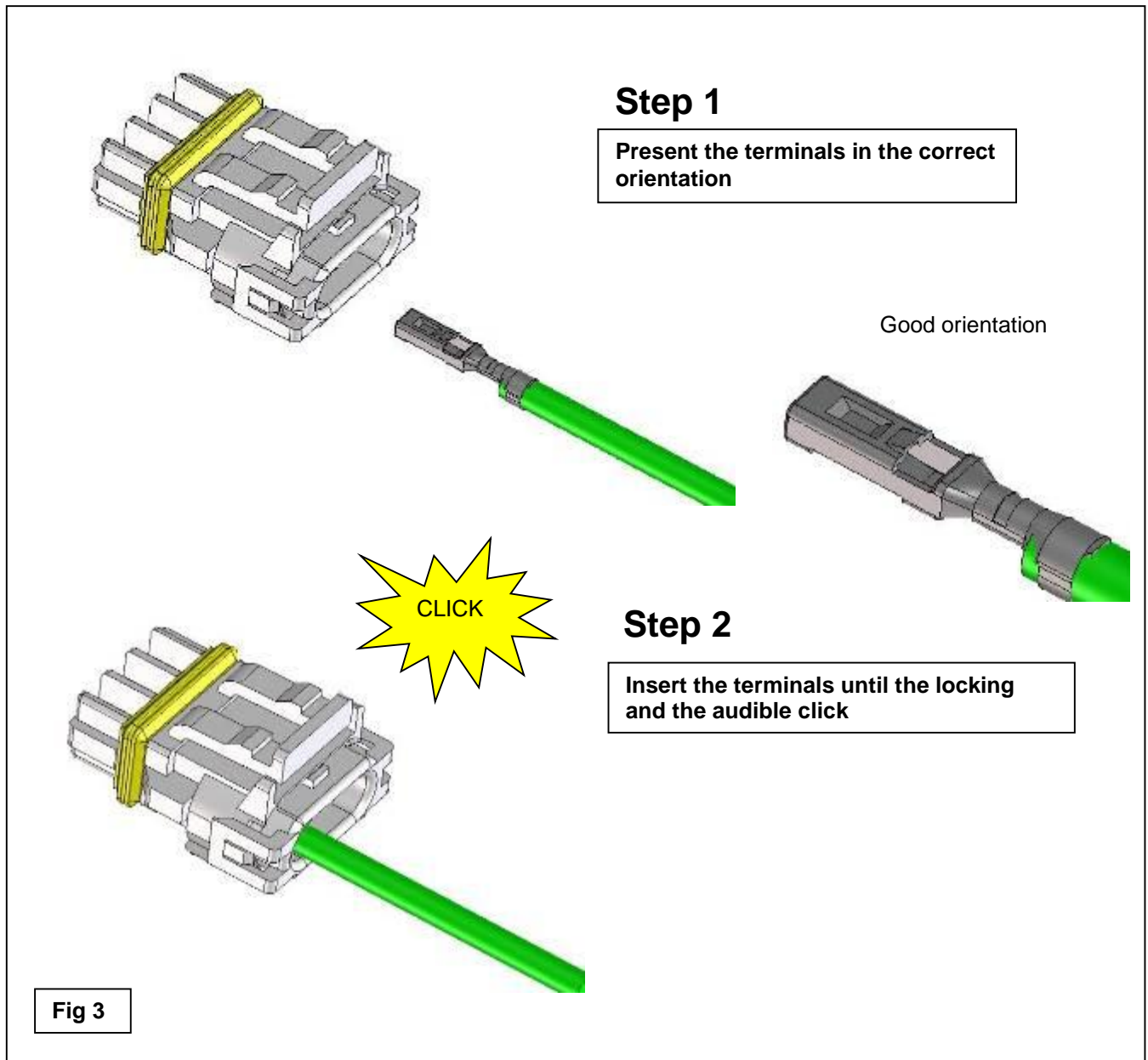
#### **WARNING:**

**BEFORE THE TERMINAL INSERTION, PLEASE MAKE SURE THAT THE CAPS LOCK IS IN PRE-LOCKED POSITION.**



REVISE ON PC ONLY		TITLE: <b>APPLICATION SPECIFICATION FOR 2.5 WATERPROOF CONN.</b>			
<b>C1</b>	SEE SHEET 1 OF 13				
REV.	DESCRIPTION	THIS DOCUMENT CONTAINS INFORMATION THAT IS PROPRIETARY TO MOLEX ELECTRONIC TECHNOLOGIES, LLC AND SHOULD NOT BE USED WITHOUT WRITTEN PERMISSION			
DOCUMENT NUMBER AS-52117-001		DOC. TYPE PS	DOC. PART 001	CUSTOMER GENERAL MARKET	SHEET 6 OF 13

With the housing assembly and terminal facing each other as below (Step1), proceed to insert terminal into the housing in the wire-end seal side until it locks into the housing assembly with a “click”. (Step2) If the terminal is in the reverse position, it will not lock. In this situation, reconfirm the proper position of the terminal and reinsert.

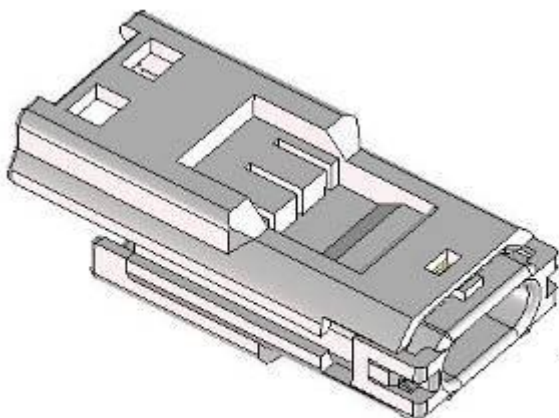


REVISE ON PC ONLY		TITLE: <b>APPLICATION SPECIFICATION FOR 2.5 WATERPROOF CONN.</b>			
<b>C1</b>	SEE SHEET 1 OF 13				
REV.	DESCRIPTION	THIS DOCUMENT CONTAINS INFORMATION THAT IS PROPRIETARY TO MOLEX ELECTRONIC TECHNOLOGIES, LLC AND SHOULD NOT BE USED WITHOUT WRITTEN PERMISSION			
DOCUMENT NUMBER AS-52117-001		DOC. TYPE PS	DOC. PART 001	CUSTOMER GENERAL MARKET	SHEET 7 OF 13



**Step 1**

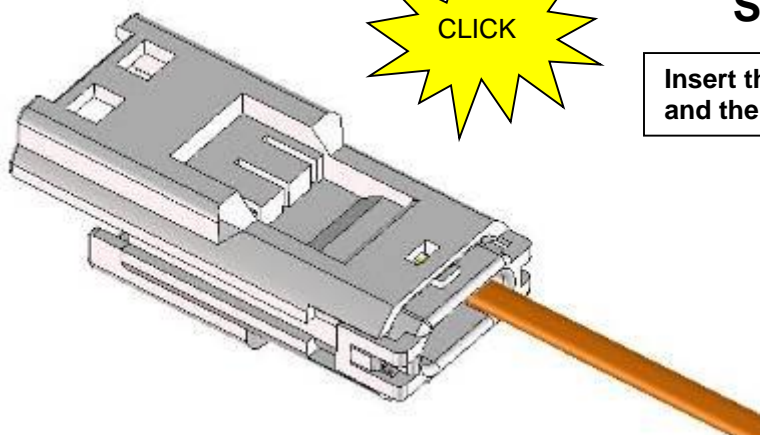
Present the terminals in the correct orientation



Good orientation


**Step 2**

Insert the terminals until the locking and the audible click



**Fig 4**

REVISE ON PC ONLY		TITLE: <b>APPLICATION SPECIFICATION FOR 2.5 WATERPROOF CONN.</b>			
<b>C1</b>	SEE SHEET 1 OF 13				
REV.	DESCRIPTION	THIS DOCUMENT CONTAINS INFORMATION THAT IS PROPRIETARY TO MOLEX ELECTRONIC TECHNOLOGIES, LLC AND SHOULD NOT BE USED WITHOUT WRITTEN PERMISSION			
DOCUMENT NUMBER AS-52117-001		DOC. TYPE PS	DOC. PART 001	CUSTOMER GENERAL MARKET	SHEET 8 OF 13



**WARNING:**

**INSERT THE CRIMPED TERMINALS STRAIGHTLY INTO THE WIRE END SEAL OPENING. DO NOT TWIST OR SLANT THE CRIMPED TERMINALS WHEN INSERTING. WHEN THE TERMINAL SEEMS TO BE CAUGHT DURING INSERTION, DO NOT FORCE THE TERMINALS INTO THE HOUSING AND INSERT THE TERMINAL AGAIN. IF TERMINALS ARE FORCED IN, IT COULD CAUSE THE SEALING TO TEAR.**

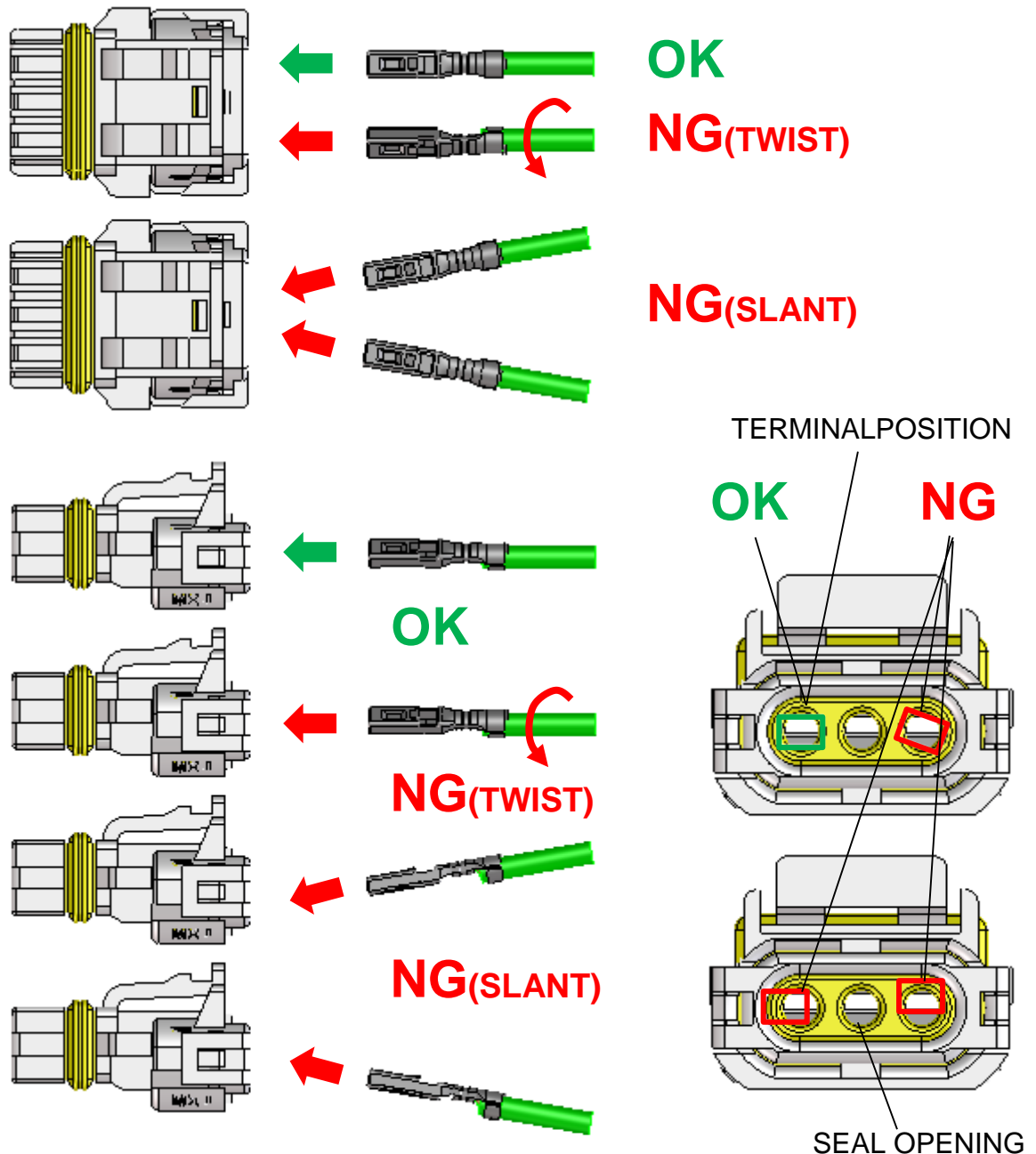
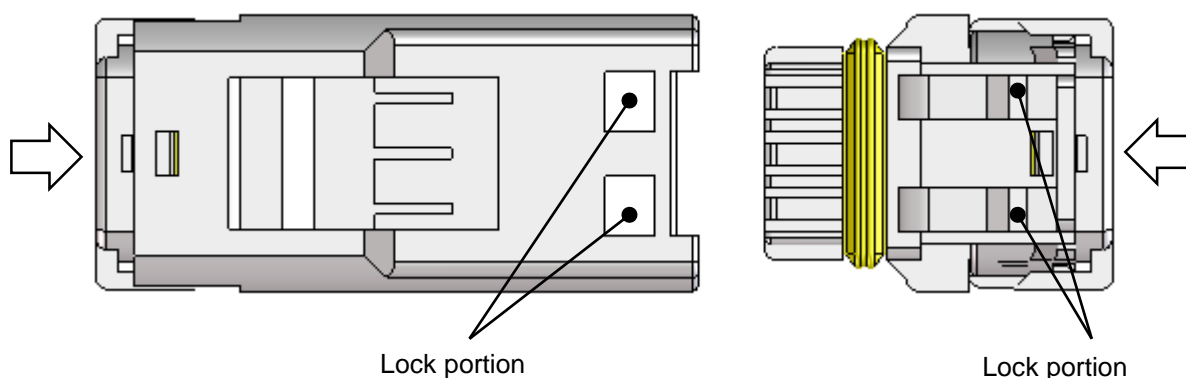


Fig 5

REVISE ON PC ONLY		TITLE:			
<b>C1</b>	SEE SHEET 1 OF 13	<b>APPLICATION SPECIFICATION FOR 2.5 WATERPROOF CONN.</b>			
REV.	DESCRIPTION	THIS DOCUMENT CONTAINS INFORMATION THAT IS PROPRIETARY TO MOLEX ELECTRONIC TECHNOLOGIES, LLC AND SHOULD NOT BE USED WITHOUT WRITTEN PERMISSION			
DOCUMENT NUMBER AS-52117-001		DOC. TYPE PS	DOC. PART 001	CUSTOMER GENERAL MARKET	SHEET 9 OF 13

### 2.3 CAP LOCKING

After confirming the proper position of the terminal, push the cap in the direction of the arrow. Using the splash-proof connector cap tool, the cap will lock securely and easily. See Housing Assembly/Cap Fitting Tool Cross Reference Table.



Housing Assembly/Cap Fitting Tool Cross Reference

Housing Assembly	Cap Fitting Tool	Note
52266-02**	---	---
52266-0***	57147-6000	(Wire Type) AVSS0.3
52266-0***	57170-6000	(Wire Type) AVS0.3
52213-02**	---	---
52213-0***	57148-6000	(Wire Type) AVSS0.3
52213-0***	57171-6000	(Wire Type) AVS0.3
52116-0***	57130-6000	---
52117-0***	57131-6000	---

**C1**

SEE SHEET 1 OF 13

REV.

DESCRIPTION

TITLE:

**APPLICATION SPECIFICATION  
FOR 2.5 WATERPROOF CONN.**

THIS DOCUMENT CONTAINS INFORMATION THAT IS PROPRIETARY TO MOLEX ELECTRONIC  
TECHNOLOGIES, LLC AND SHOULD NOT BE USED WITHOUT WRITTEN PERMISSION

DOCUMENT NUMBER  
AS-52117-001

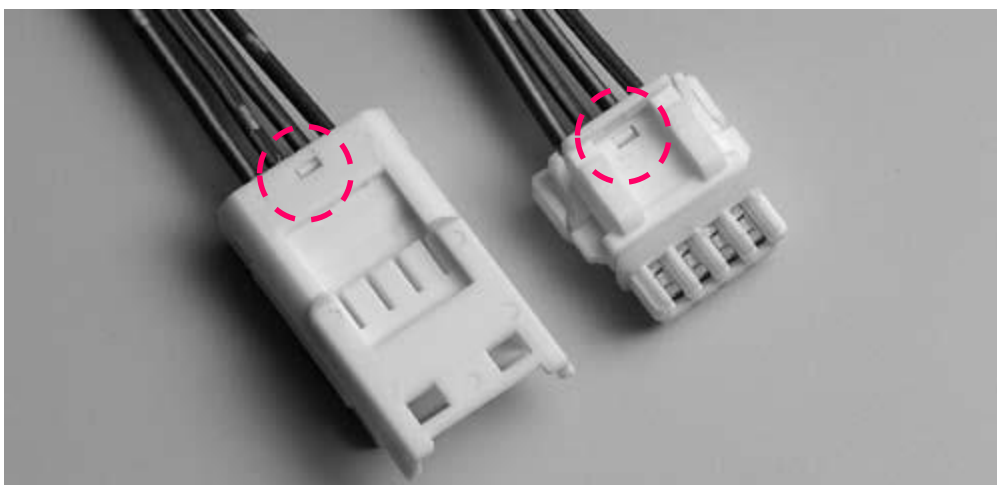
DOC. TYPE  
PS

DOC. PART  
001

CUSTOMER  
GENERAL MARKET

SHEET  
10 OF 13

When the cap locks completely, the cap lock portion will show in the lock window (reverse side). If only one side is locked, water resistance may be compromised.

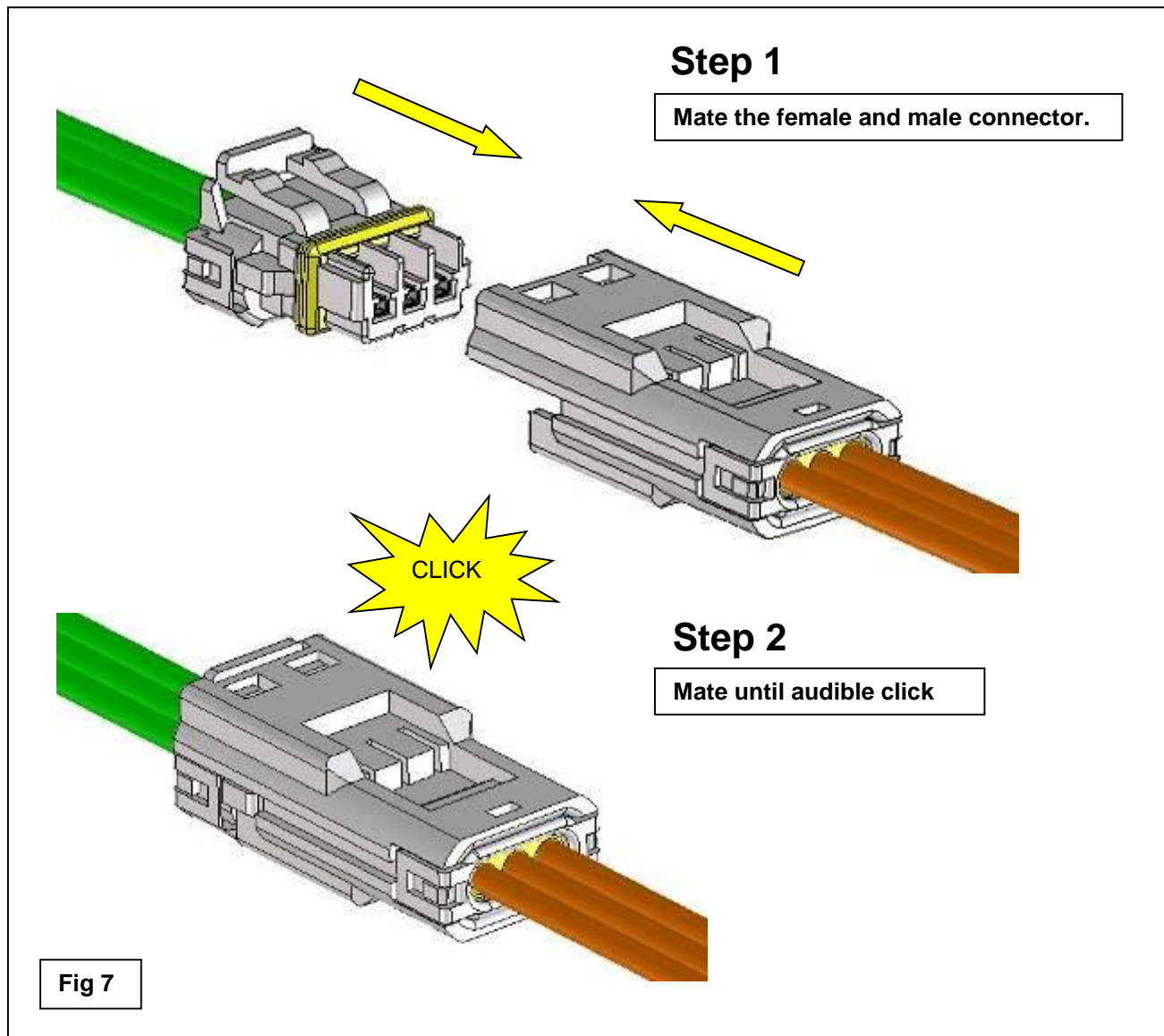


### Photo 1

	REVISE ON PC ONLY		TITLE:  <b>APPLICATION SPECIFICATION FOR 2.5 WATERPROOF CONN.</b>			
	<b>C1</b>	SEE SHEET 1 OF 13				
	REV.	DESCRIPTION	THIS DOCUMENT CONTAINS INFORMATION THAT IS PROPRIETARY TO MOLEX ELECTRONIC TECHNOLOGIES, LLC AND SHOULD NOT BE USED WITHOUT WRITTEN PERMISSION			
DOCUMENT NUMBER <b>AS-52117-001</b>			DOC. TYPE <b>PS</b>	DOC. PART <b>001</b>	CUSTOMER <b>GENERAL MARKET</b>	SHEET <b>11 OF 13</b>
EN-127(2015-12)						

## 2.4 MATING

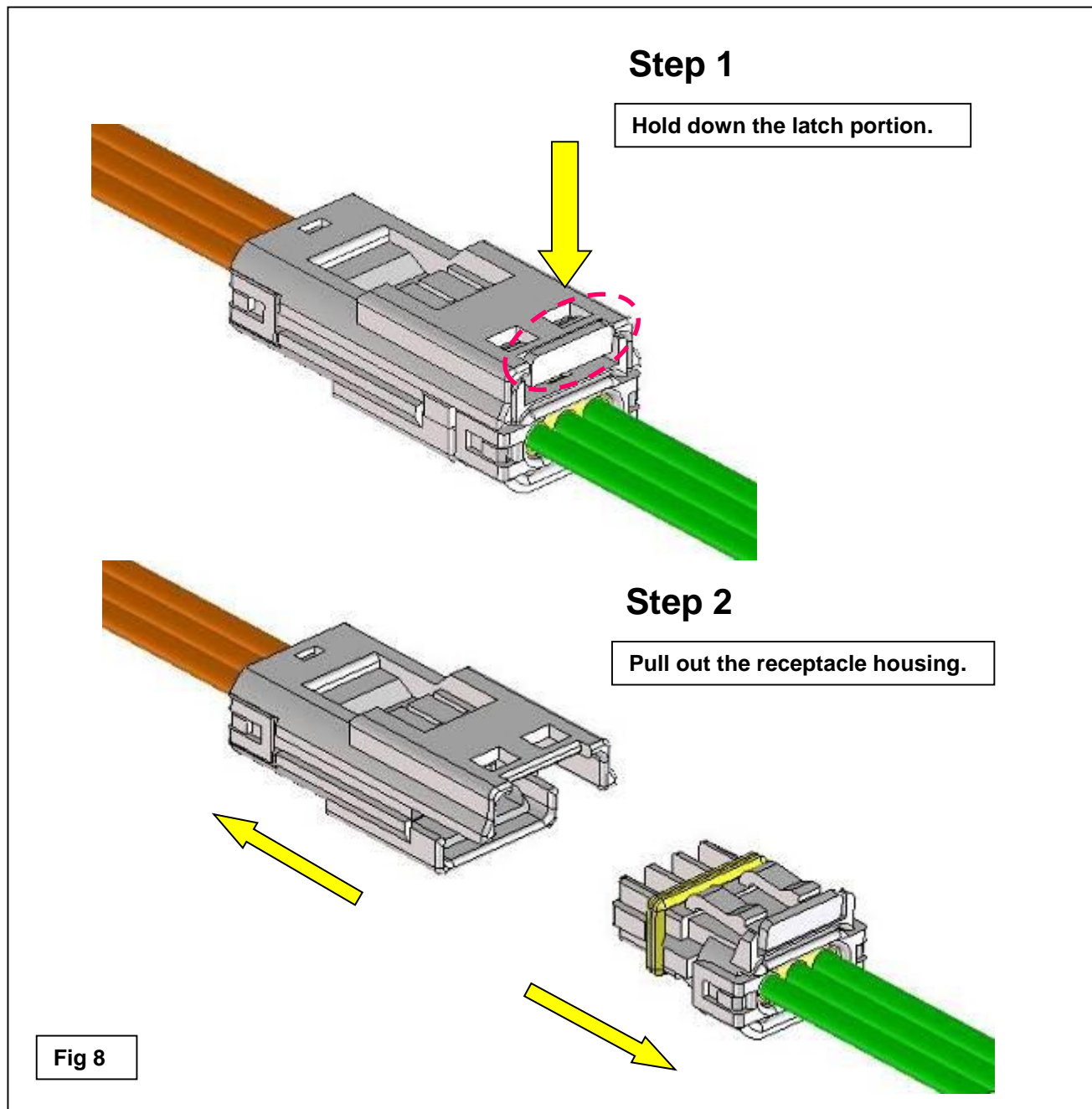
Join the lock portion of the plug and receptacle housings (Fig 7). Continue mating until a “click” is felt or heard.



REVISE ON PC ONLY		<b>TITLE:</b> <b>APPLICATION SPECIFICATION FOR 2.5 WATERPROOF CONN.</b>			
<b>C1</b>	SEE SHEET 1 OF 13				
REV.	DESCRIPTION	THIS DOCUMENT CONTAINS INFORMATION THAT IS PROPRIETARY TO MOLEX ELECTRONIC TECHNOLOGIES, LLC AND SHOULD NOT BE USED WITHOUT WRITTEN PERMISSION			
DOCUMENT NUMBER AS-52117-001		DOC. TYPE PS	DOC. PART 001	CUSTOMER GENERAL MARKET	SHEET 12 OF 13

**2.5 UNMATING**

Hold down the latch portion of the receptacle housing (Step 1) and pull out the receptacle housing (Step 2).



REVISE ON PC ONLY		TITLE: <b>APPLICATION SPECIFICATION FOR 2.5 WATERPROOF CONN.</b>			
<b>C1</b>	SEE SHEET 1 OF 13				
REV.	DESCRIPTION	THIS DOCUMENT CONTAINS INFORMATION THAT IS PROPRIETARY TO MOLEX ELECTRONIC TECHNOLOGIES, LLC AND SHOULD NOT BE USED WITHOUT WRITTEN PERMISSION			
DOCUMENT NUMBER AS-52117-001		DOC. TYPE PS	DOC. PART 001	CUSTOMER GENERAL MARKET	SHEET 13 OF 13

CONFIDENTIAL

## 【1. 適用範囲 SCOPE】

本仕様書は 52116-024 \* , -034 \* , -041 \* の梱包方法について規定する。

THIS SPECIFICATIONS PROVIDE FOR THE METHOD OF PACKING 52116-024 \* , -034 \* , -041 \*.

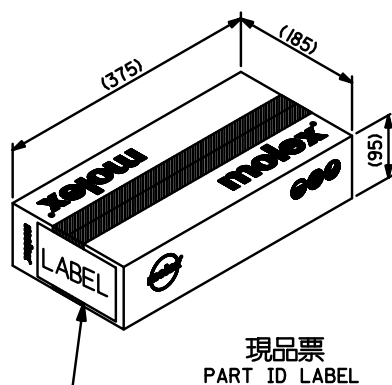
## 【2. 製品名称及び型番 PRODUCT NAME AND PART NUMBER】

- 製品名称 (Product Name) 2.5 WATERPROOF CONN. PLUG HS' G ASS' Y
- 型番 (Part Number) 52116-024 \* , -034 \* , -041 \*

## 【3. 標準梱包内容 GENERAL PACKAGING INFORMATION】

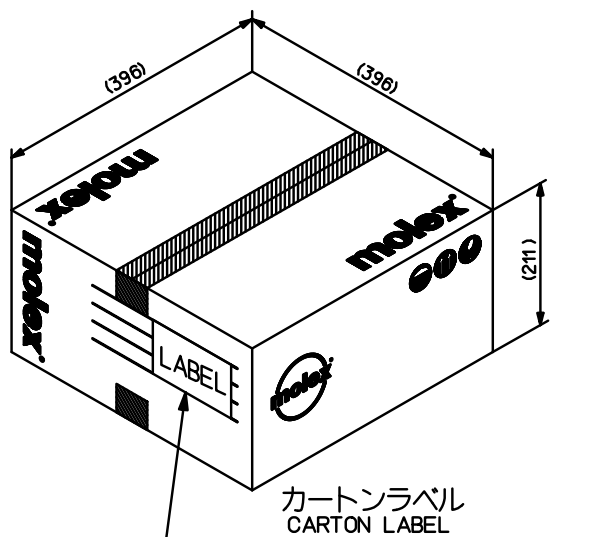
- 内装カートン (Inner carton) 4 carton
- 製品数量 (Parts par carton box) 2WAY: 1,800PCS (450PCS / Inner carton × 4)  
3WAY: 1,800PCS (450PCS / Inner carton × 4)  
4WAY: 1,600PCS (400PCS / Inner carton × 4)

## 【4. 参考寸法 REFERENCE DIMENSIONS】



現品票  
PART ID LABEL  
(製品型番, 数量, ロットNO. 表示)  
INDICATION OF PART No., QUANTITY, LOT No.

内装カートン  
INNER CARTON



カートンラベル  
CARTON LABEL  
(製品型番, 数量, ロットNO. 表示)  
INDICATION OF PART No., QUANTITY, LOT No.

外装カートン  
EXTERIOR CARTON

REVISE ON PC ONLY			TITLE: PACKAGING SPECIFICATION 2.5 WATERPROOF CONN. PLUG HS'G ASS'Y				
A3		CORRECTED 113630 2017/07/10 YFUSHIMI					
REV. DESCRIPTION			THIS DOCUMENT CONTAINS INFORMATION THAT IS PROPRIETARY TO MOLEX ELECTRONIC TECHNOLOGIES, LLC AND SHOULD NOT BE USED WITHOUT WRITTEN PERMISSION				
DESIGN CONTROL JTR		STATUS P1	WRITTEN BY: YFUSHIMI	CHECKED BY: TAITO	APPROVED BY: TOSADA	DATE: 2016/10/07	
DOCUMENT NUMBER 521160000			DOC. TYPE PS	DOC. PART P00	CUSTOMER GENERAL		SHEET 1 OF 2

[illegible]

	REVISE ON PC ONLY		TITLE:  PACKAGING SPECIFICATION 2.5 WATERPROOF CONN. PLUG HS'G ASS'Y				
	A3	CORRECTED 113630 2017/07/10 YFUSHIMI					
		THIS DOCUMENT CONTAINS INFORMATION THAT IS PROPRIETARY TO MOLEX ELECTRONIC TECHNOLOGIES, LLC AND SHOULD NOT BE USED WITHOUT WRITTEN PERMISSION					
		REV.	DESCRIPTION				
DOCUMENT NUMBER 521160000			DOC. TYPE PS	DOC. PART P00	CUSTOMER GENERAL	SHEET 2 OF 2	